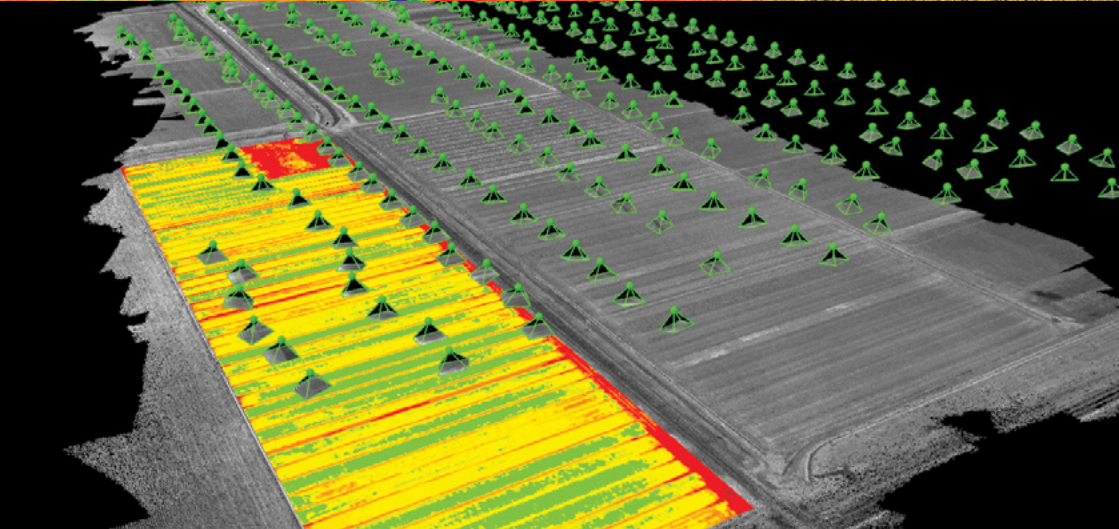
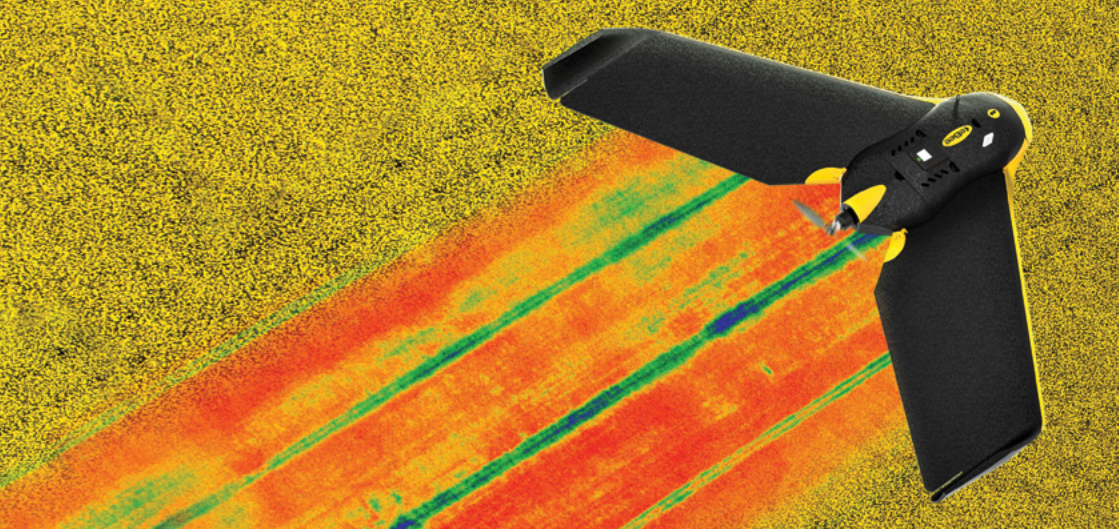


Parrot

SEQUOIA








Capture
the invisible



Capture the invisible

The Sequoia multispectral sensor captures both visible and invisible images, providing calibrated data to optimally monitor the health and vigor of your crops. Sequoia captures calibrated wavelength, Green, Red, Red-Edge and Near Infrared to highlight the health of plants.

-  **Identify problem areas in a field**
that need attention and further scouting
-  **Refine fertilization**
by detecting nutrient deficiencies symptoms
-  **Optimize pesticide input**
through early detection of biotic stress
-  **Control crop irrigation**
by identifying areas where water stress is suspected
-  **Estimate crop yield**
by processing and exploiting agronomic indices

The most accurate multispectral imagery

The multispectral sensor

A synchronous, global shutter drone sensor with four bands and an RGB camera for the ultimate in multispectral accuracy.





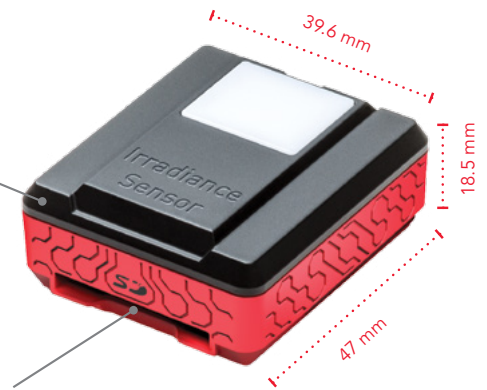
Sunshine sensor

The sunshine sensor

A fully-integrated sunshine sensor captures and logs the current lighting conditions and automatically calibrates outputs of the camera so measurements are absolute.

GPS & IMU

The best geo-tagging technology for optimum mapping accuracy



Additional storage thanks to SD card slot



36 g / 1.3 oz

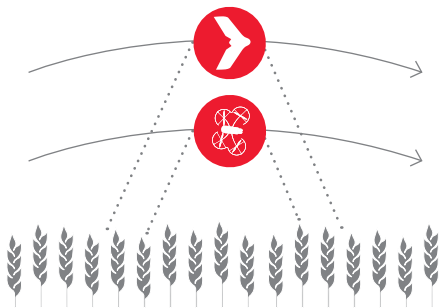
Designed for every drone*

With long endurance and significant speed, fixed-wings are perfect to cover large fields.

Flying at a lower altitude and speed, multi-rotor drones offer great practicability and a better accuracy over small fields and individual fields.



Sequoia can be easily integrated into both kinds of drones: **fixed-wing** and **multi-rotor**.

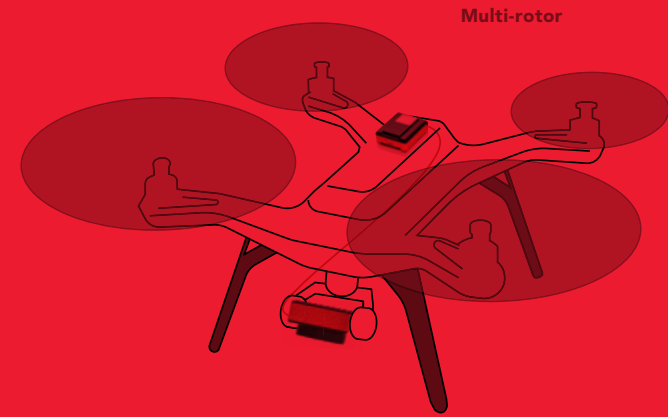
* Please check compatibility of Sequoia with your drone on www.parrot.com



Fast capture rate
for lower altitude flight
and improved ground resolution

Different drones
for different needs

	 Fixed Wing	 Multi-rotor
Coverage	Large	Small
Flying height	From 230 to 500 feet	From 30 to 500 feet
Picture resolution	cm/inch per pixel	mm per pixel
Agricultural use	- Whole field coverage - Large field coverage	- Particular parcel coverage - Small field coverage
Flight time	Long	Short
Wind resistance	Strong	Low



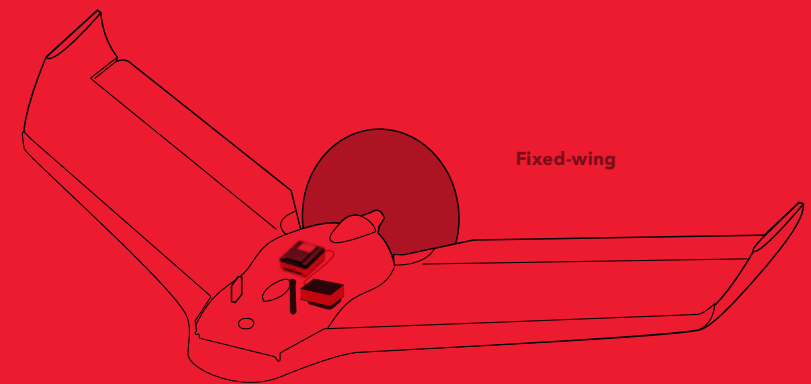
Easily adapt to any drone
standard minicam form factor



Flexible integration
3 mounts available for the sunshine sensor



Doesn't need battery
powered by the drone over micro-USB



Where to buy Sequoia ?

Different options for different needs:



Sequoia + the eBee Ag drone

Used by farmers and consultants the world over, the highly durable and fully automatic eBee Ag is the next logical step in your operation's evolution.

- Fully compatible with Sequoia.
- Cover more acres, more easily.
- Drone-to-tractor workflow.
- Ultra-light for maximum safety.
- Backed by senseFly's global support network.

A Proven Performer:

200,000+ senseFly flights to date
58,000+ flight hours...



eBee Ag drone



Sequoia + the mapping by Pix4Dmapper

Capture information not visible to the naked eye, with the unique integration of Pix4Dmapper and Sequoia. Generate index maps, like NDVI, and orthomosaics for digital scouting and analytics: all from one flight.

Local Processing:

stay independent, process where and when you want

Index Calculator:

from the reflectance map, generate NDVIs or your own index maps, then classify for better interpretation

Integration:

export maps for Ag software or machinery in industry-standard formats



Pix4Dmapper



Sequoia + the cloud solution – Atlas™

MicaSense ATLAS™: a complete solution for processing, storage, presentation, and analysis of your multispectral data.

Intuitive interface

simplifies data management for all your farms and fields.

Automatic cloud service

lets you to focus on your fields, not on processing raw data.

Identify changes over time

with specialized visualization tools.

Scout your way to problem areas

using any connected device.

Secure servers and support

team based in North America (Seattle, WA - USA).



* Check of the list of countries and crops available on www.airinov.fr

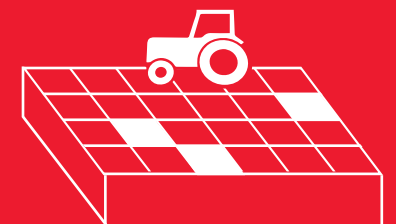


Sequoia + the fertilization prescriptions*

Airinov can help you turn your Sequoia and drone into a real farm management tool, truly useful. No need to be a GIS expert nor a software developer, everything happens on the Internet on our farmer-friendly platform synchronized with a smartphone app'.

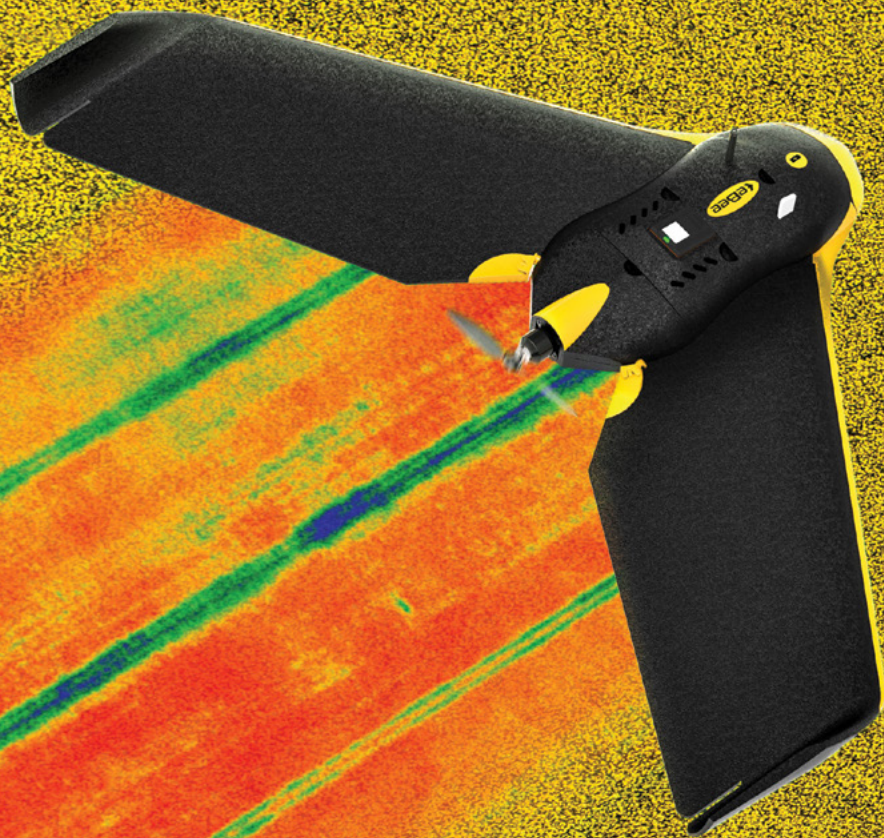
Airinov support you from the first steps of flight logistics, through to agronomy interpretation and up to the final integration of the map into your tractor guiding system.

Have a try with your free trial coupon included with any Sequoia you buy.



Parrot

SEQUOIA



Capture
the invisible